

FACTORY > ROBOTICS

Airskin Technology Adopted by BMW

The BMW Group is using Airskin's technology to allow industrial robots to work without fences in automotive seat measurement operations.

May 10, 2024



A KUKA Agilus robot outfitted with Airskin's collaborative robot technology in the seat measurement work cell at BMW Regensburg.



At the BMW Group's plant in Regensburg, Germany, an industrial robot that previously was required to operate inside a fenced area for safety has been adapted with Airskin's collaborative robot tech. As a result, the robot can now operate without a fence and in collaborative ways with employees.

This KUKA robot is used in seat measurement operations at the BMW plant. Because workers were separated from this robot by fences for safety reasons, any time an employee had to manually correct seats to address measurement errors, those employees had to enter and exit the cell through the safety door, consuming time and energy due to the system's safety stop.

In addition to interrupting the process whenever workers had to enter the robot work cell, the safety fences took up a lot of space on the already crowded production line.

By implementing Airskin for the robot and the measuring tool, this robotic application can now be operated without safety fences and maintain the highest level of safety. In addition, the seat measurement application's layout has been changed, improving cycle times by 18 seconds.

According to Airskin, its technology—which fits onto industrial robots—continuously monitors potential collisions and immediately stops the robot when necessary.

See more about Airskin's technology in this video and article about the company's work with KUKA.

CONTINUED READING





Airskin Transforms Industrial Robots into Cobots



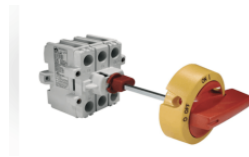
Airskin Demonstrates Application on KUKA Robot at Modex 2024

SPONSORED RECOMMENDATIONS



Understanding and Using E-Stops

E-stops, or emergency stop switches, are used to ensure machine as well as personnel safety. They are used to provide a consistent and predictable failsafe response on a wide ...



Demystifying motor disconnect switches: What are they and ho...

From conveyor belts to drum mixers, motors are used in virtually every industrial application to drive machinery. Equipment downtime is the main motivation behind monitoring and...



Full Line of DIN Rail Terminal Blocks Video

Altech offers an extensive line of DIN Rail Terminal Blocks including all major Connection Technologies available in the industry to meet requirements for a vast variety of applications...



The Value of Integrating DIN Rail Cylindrical Fuse...

What short circuit currents do I have to consider when purchasing a DIN rail cylindrical fuse holder? That data is available from the manufacturer. For example, Altech cylindrical...

